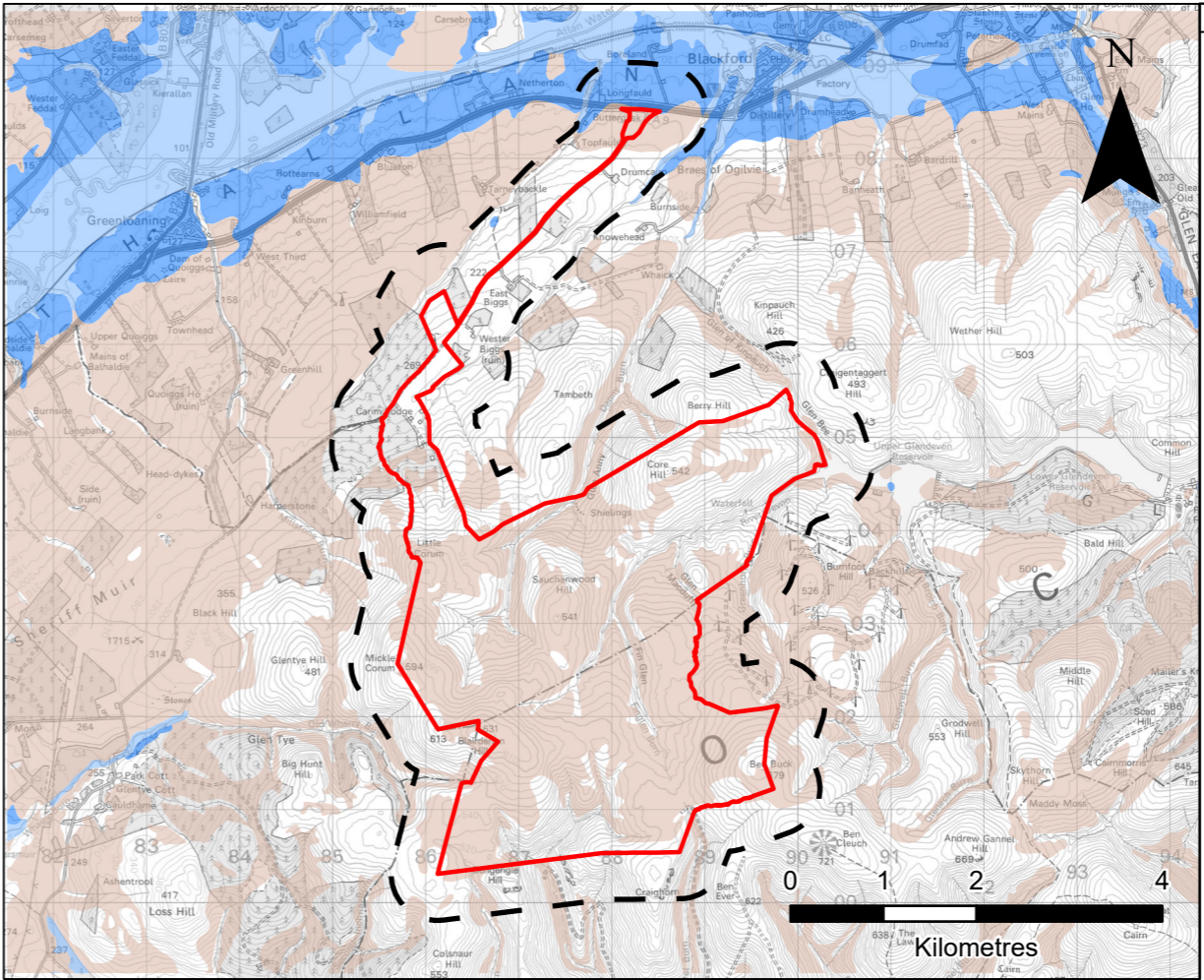


MAP EXTRACT Scale - 1:130,000 @ A3



SUPERFICIAL AQUIFERS Scale - 1:80,000 @ A3

LEGEND

Study Area (Application Boundary 500 m Buffer)

Application Boundary

Bedrock Aquifer Productivity

- Intergranular/Fracture; High Productivity
- Intergranular/Fracture; Moderate Productivity
- Fracture; Low Productivity

Superficial Deposits Aquifer Productivity

- Intergranular; High Productivity
- Intergranular; Moderate to High Productivity
- Not a significant aquifer

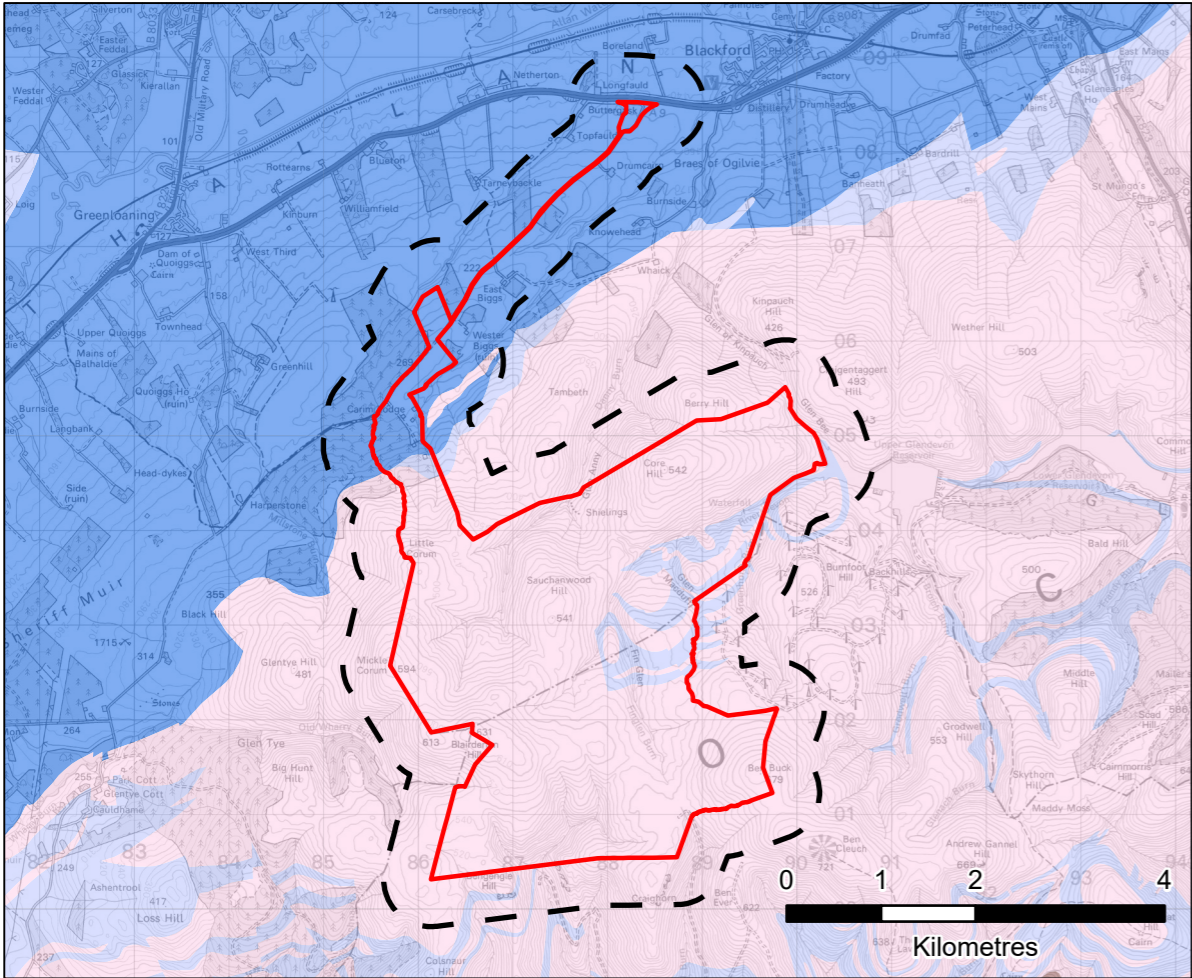
Groundwater Vulnerability in the Uppermost Aquifer Vulnerability Class

0 - Not sufficient data to classify vulnerability: e.g. below lochs; in urban areas where geological and/or soils data are missing; or where superficial deposits are mapped but not classified.

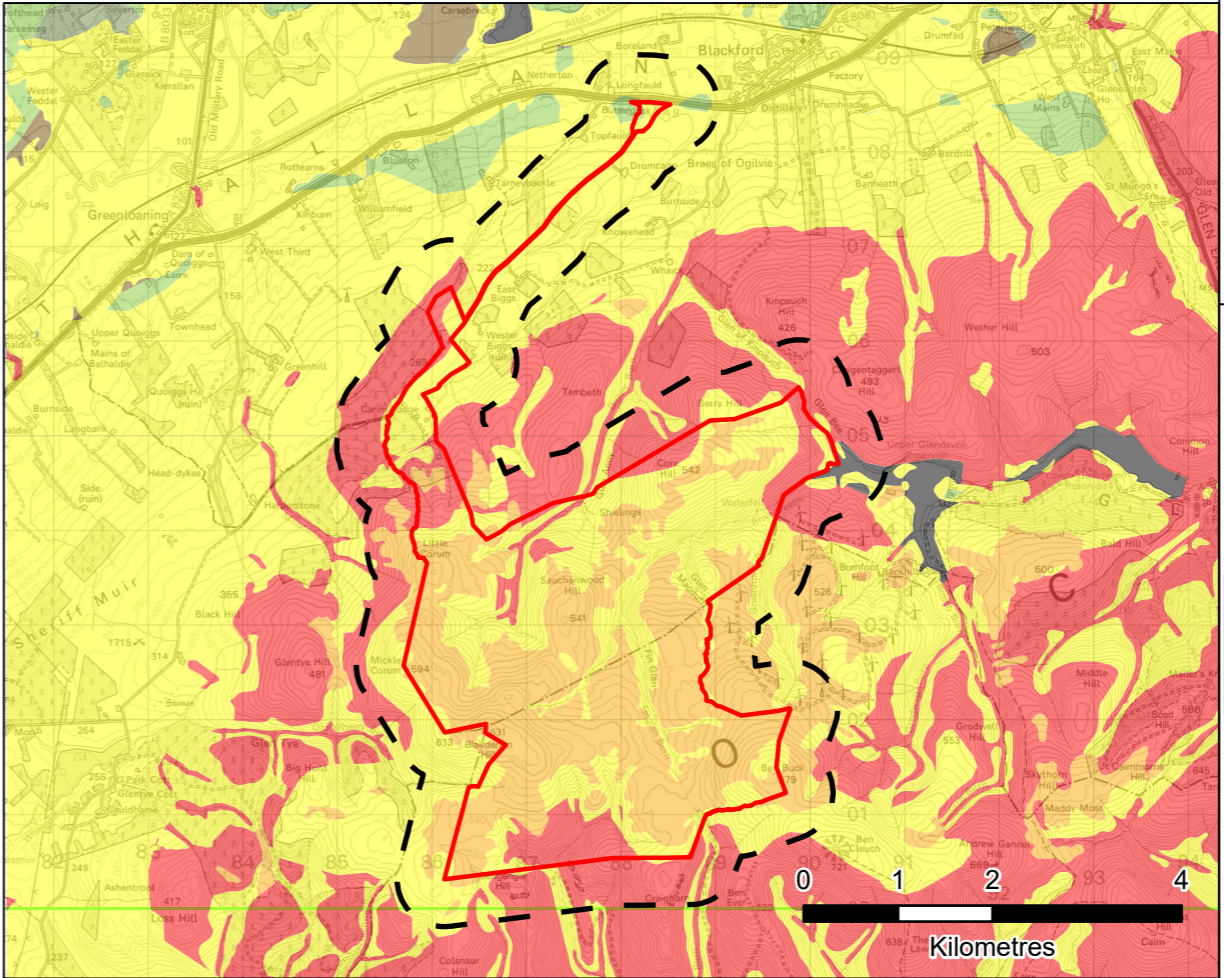
4a - Vulnerable to those pollutants not readily adsorbed or transformed. Less likely to have clay present in superficial deposits (therefore generally higher vulnerability than 4b).

4b - Vulnerable to those pollutants not readily adsorbed or transformed. More likely to have clay present in superficial deposits (therefore generally lower vulnerability than 4a).

5 - Vulnerable to most pollutants, with rapid impact in many scenarios.



BEDROCK AQUIFERS Scale - 1:80,000 @ A3



GROUNDWATER VULNERABILITY IN THE UPPERMOST AQUIFER Scale - 1:80,000 @ A3

WINDBURN WIND FARM LTD

WINDBURN WIND FARM
HYDROLOGY, HYDROGEOLOGY,
AND GEOLOGY

GROUNDWATER VULNERABILITY

FIGURE 10.7

SCALE ON MAPS Date
APRIL 2025