

OS reference:	295183E 720363N	Horizontal field of view:	90° (cylindrical projection)	Camera:	NIKON D750	Photography Date:	29/06/2023
AOD:	92.17 m	Principal distance:	522 mm	Lens:	50mm Fixed Focal Length	Photography Time:	12:10
Direction of view:	111°	Paper size:	841 x 297 mm (half A1)	Camera height:	1.5 m		
Nearest turbine:	18.32 km	Correct printed image size:	820 x 260 mm				

Wind Farm Developments key  
(by status):

Proposed scheme	Application
Operational	
Consented	

Windburn  
**Figure 7.20a**  
VP13: Gask Ridge - St Davids

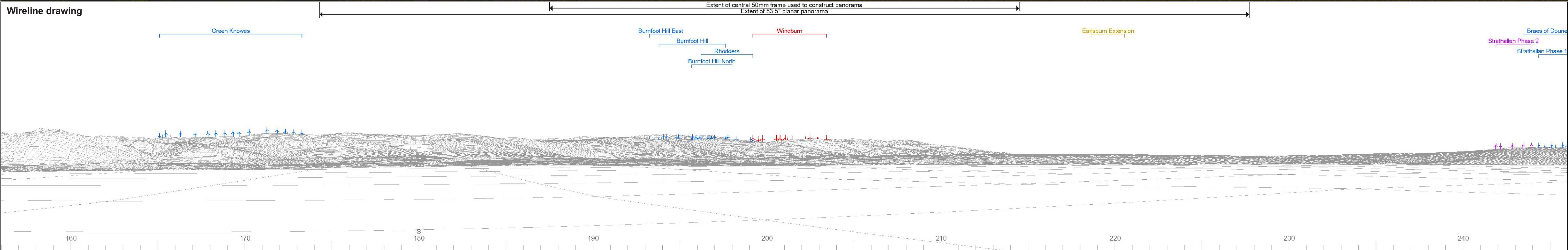




Baseline photograph

This image provides landscape and visual context only

Wireline drawing



OS reference: 295183E 720363N  
AOD: 92.17 m  
Direction of view: 201°  
Nearest turbine: 18.32 km

Horizontal field of view: 90° (cylindrical projection)  
Principal distance: 522 mm  
Paper size: 841 x 297 mm (half A1)  
Correct printed image size: 820 x 260 mm

Camera: NIKON D750  
Lens: 50mm Fixed Focal Length  
Camera height: 1.5 m

Photography Date: 29/06/2023  
Photography Time: 12:10

Wind Farm Developments key  
(by status):

Proposed scheme  
Operational  
Consented

Application

Windburn  
Figure 7.20b  
VP13: Gask Ridge - St Davids

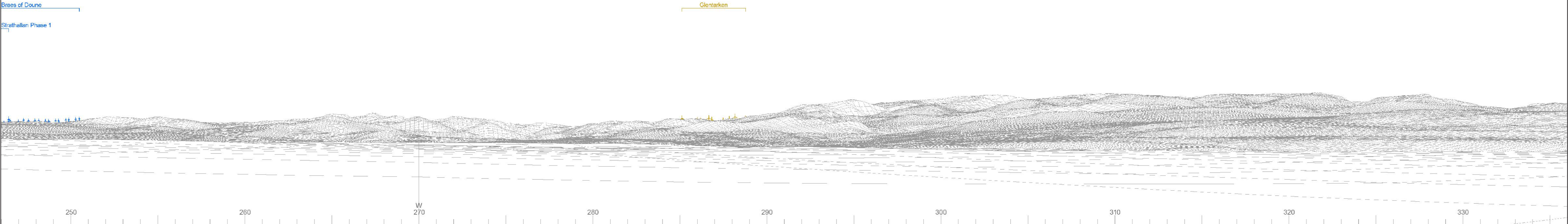




Baseline photograph

This image provides landscape and visual context only

Wireline drawing



OS reference: 295183E 720363N  
AOD: 92.17 m  
Direction of view: 291°  
Nearest turbine: 18.32 km

Horizontal field of view: 90° (cylindrical projection)  
Principal distance: 522 mm  
Paper size: 841 x 297 mm (half A1)  
Correct printed image size: 820 x 260 mm

Camera: NIKON D750  
Lens: 50mm Fixed Focal Length  
Camera height: 1.5 m

Photography Date: 29/06/2023  
Photography Time: 12:10

Wind Farm Developments key  
(by status):

Proposed scheme  
Operational  
Consented

Application

Windburn  
Figure 7.20c  
VP13: Gask Ridge - St Davids

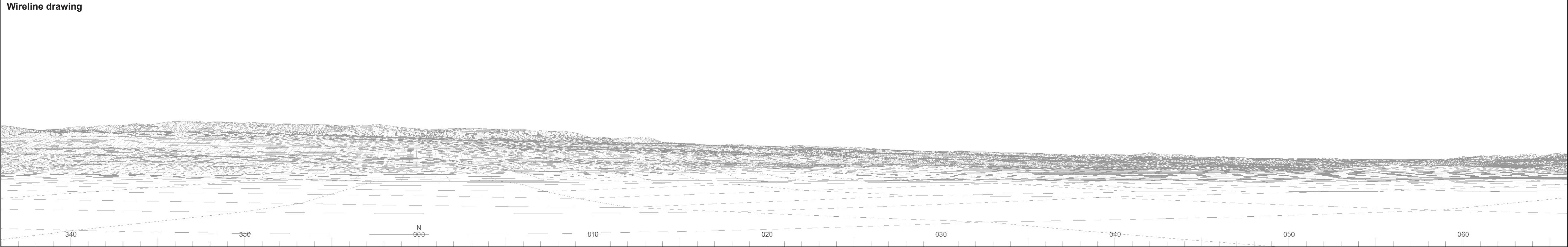




Baseline photograph

This image provides landscape and visual context only

Wireline drawing



OS reference:	295183E 720363N	Horizontal field of view:	90° (cylindrical projection)	Camera:	NIKON D750	Photography Date:	29/06/2023
AOD:	92.17 m	Principal distance:	522 mm	Lens:	50mm Fixed Focal Length	Photography Time:	12:10
Direction of view:	21°	Paper size:	841 x 297 mm (half A1)	Camera height:	1.5 m		
Nearest turbine:	18.32 km	Correct printed image size:	820 x 260 mm				

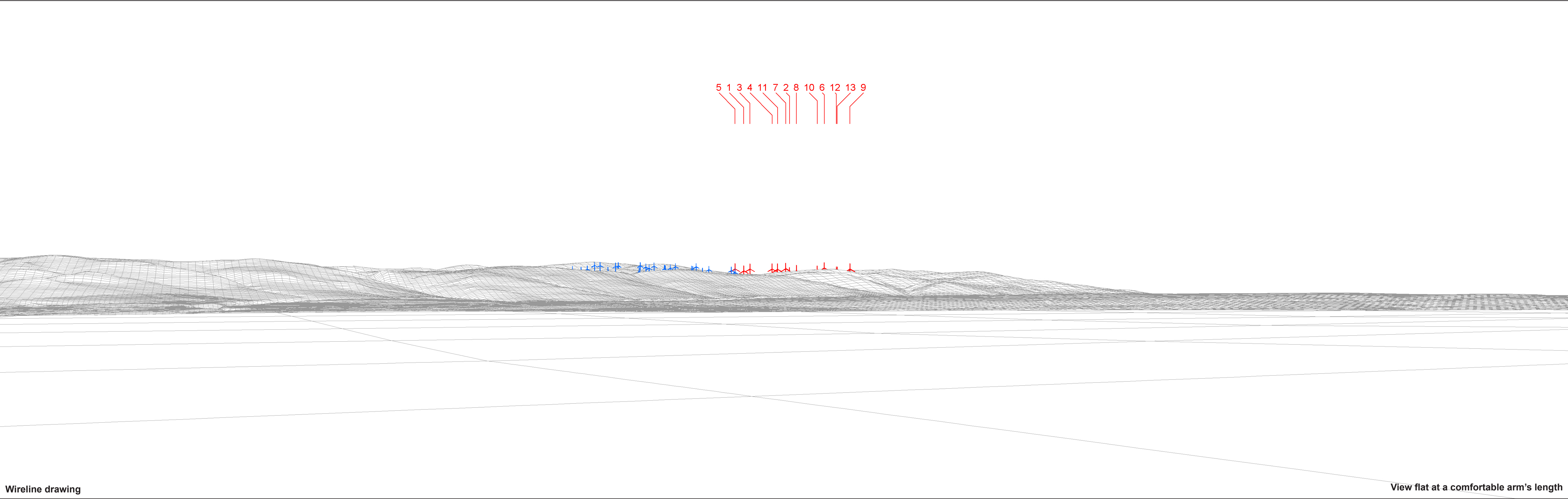
Wind Farm Developments key  
(by status):

Proposed scheme	Application
Operational	
Consented	

Windburn  
Figure 7.20d  
VP13: Gask Ridge - St Davids



© Crown copyright and database rights 2025 Ordnance Survey/A000060812



Wireline drawing

View flat at a comfortable arm's length



OS reference:	295183E 720363N	Horizontal field of view:	53.5° (planar projection)
AOD:	92.17 m	Principal distance:	812.5 mm
Direction of view:	201°	Paper size:	841 x 297 mm (half A1)
Nearest turbine:	18.32 km	Correct printed image size:	820 x 260 mm

Wind Farm Developments key  
(by status):

Proposed scheme  
Operational

Windburn  
Figure 7.20e  
VP13: Gask Ridge - St Davids





Photomontage

View flat at a comfortable arm's length



OS reference:	295183E 720363N	Horizontal field of view:	53.5° (planar projection)	Camera:	NIKON D750	Photography Date:	29/06/2023
AOD:	92.17 m	Principal distance:	812.5 mm	Lens:	50mm Fixed Focal Length	Photography Time:	12:10
Direction of view:	201°	Paper size:	841 x 297 mm (half A1)	Camera height:	1.5 m		
Nearest turbine:	18.32 km	Correct printed image size:	820 x 260 mm				

Windburn  
Figure 7.20f  
VP13: Gask Ridge - St Davids