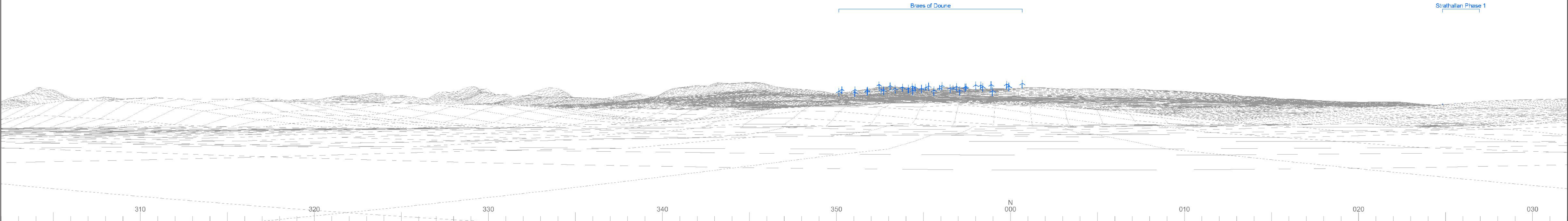




Baseline photograph

This image provides landscape and visual context only

Wireline drawing



OS reference: 273235E 698224N
AOD: 12.3 m
Direction of view: 347°
Nearest turbine: 14.78 km

Horizontal field of view: 90° (cylindrical projection)
Principal distance: 522 mm
Paper size: 841 x 297 mm (half A1)
Correct printed image size: 820 x 260 mm

Camera: NIKON D750
Lens: 50mm Fixed Focal Length
Camera height: 1.5 m

Photography Date: 11/10/2023
Photography Time: 14:07

Wind Farm Developments key
(by status):

Proposed scheme
Operational
Consented

Application

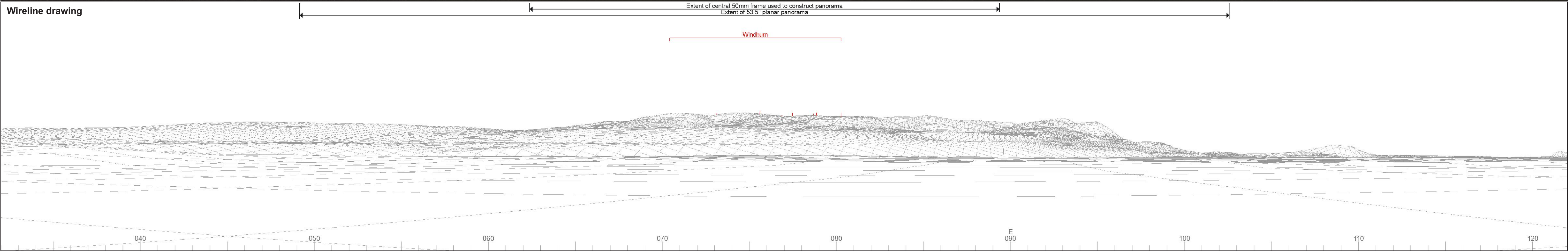
Windburn
Figure 7.24a
VP17: Blairdrummond Castle Safari Park



Baseline photograph

This image provides landscape and visual context only

Wireline drawing



OS reference: 273235E 698224N
AOD: 12.3 m
Direction of view: 77°
Nearest turbine: 14.78 km

Horizontal field of view: 90° (cylindrical projection)
Principal distance: 522 mm
Paper size: 841 x 297 mm (half A1)
Correct printed image size: 820 x 260 mm

Camera: NIKON D750
Lens: 50mm Fixed Focal Length
Camera height: 1.5 m

Photography Date: 11/10/2023
Photography Time: 14:07

Wind Farm Developments key
(by status):

Proposed scheme
Operational
Consented

Application

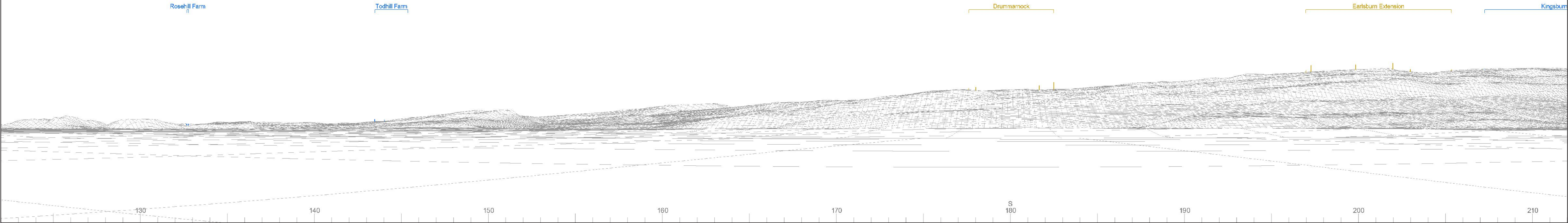
Windburn
Figure 7.24b
VP17: Blairdrummond Castle Safari Park



Baseline photograph

This image provides landscape and visual context only.

Wireline drawing

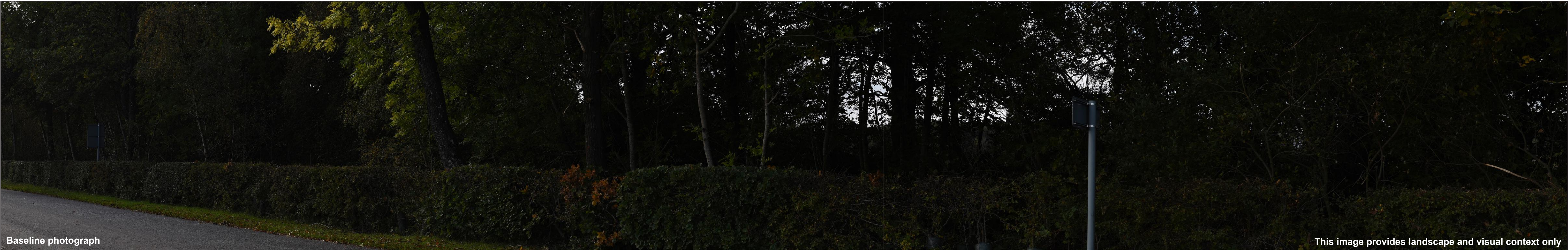


OS reference:	273235E 698224N	Horizontal field of view:	90° (cylindrical projection)	Camera:	NIKON D750	Photography Date:	11/10/2023
AOD:	12.3 m	Principal distance:	522 mm	Lens:	50mm Fixed Focal Length	Photography Time:	14:07
Direction of view:	167°	Paper size:	841 x 297 mm (half A1)	Camera height:	1.5 m		
Nearest turbine:	14.78 km	Correct printed image size:	820 x 260 mm				

Wind Farm Developments key
(by status):

Proposed scheme	Application
Operational	
Consented	

Windburn
Figure 7.24c
VP17: Blairdrummond Castle Safari Park



Baseline photograph

This image provides landscape and visual context only

Wireline drawing



OS reference: 273235E 698224N
AOD: 12.3 m
Direction of view: 257°
Nearest turbine: 14.78 km

Horizontal field of view: 90° (cylindrical projection)
Principal distance: 522 mm
Paper size: 841 x 297 mm (half A1)
Correct printed image size: 820 x 260 mm

Camera: NIKON D750
Lens: 50mm Fixed Focal Length
Camera height: 1.5 m

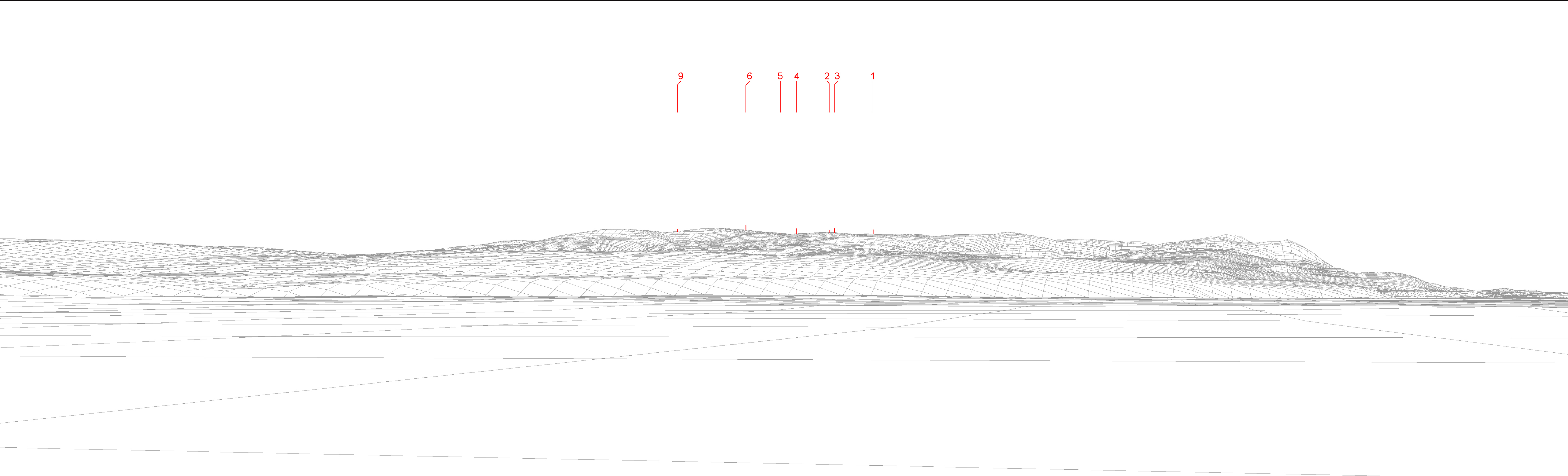
Photography Date: 11/10/2023
Photography Time: 14:07

Wind Farm Developments key
(by status):

Proposed scheme
Operational
Consented

Application

© Crown copyright and database rights 2025 Ordnance Survey 100008122



Wireline drawing

View flat at a comfortable arm's length



OS reference:	273235E 698224N	Horizontal field of view:	53.5° (planar projection)
AOD:	12.3 m	Principal distance:	812.5 mm
Direction of view:	77°	Paper size:	841 x 297 mm (half A1)
Nearest turbine:	14.78 km	Correct printed image size:	820 x 260 mm

Wind Farm Developments key
(by status):

Proposed scheme
Operational

Windburn
Figure 7.24e
VP17: Blairdrummond Castle Safari Park



© Crown copyright and database rights 2025 Ordnance Survey/A000008122



OS reference:	273235E 698224N	Horizontal field of view:	53.5° (planar projection)	Camera:	NIKON D750	Photography Date:	11/10/2023
AOD:	12.3 m	Principal distance:	812.5 mm	Lens:	50mm Fixed Focal Length	Photography Time:	14:07
Direction of view:	77°	Paper size:	841 x 297 mm (half A1)	Camera height:	1.5 m		
Nearest turbine:	14.78 km	Correct printed image size:	820 x 260 mm				

View flat at a comfortable arm's length

Windburn
Figure 7.24f
VP17: Blairdrummond Castle Safari Park