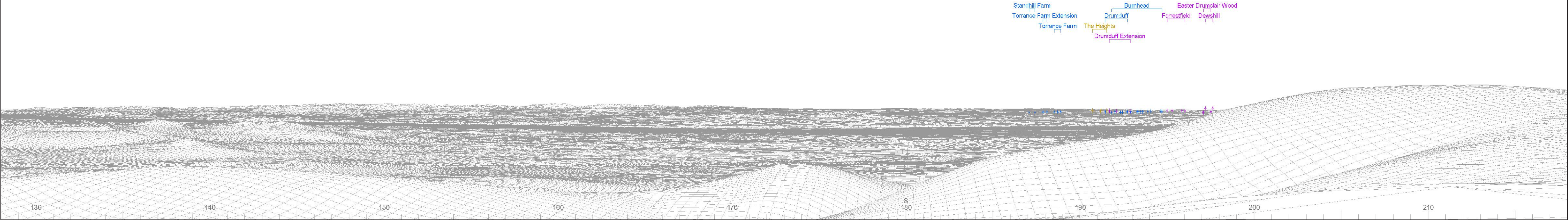




Baseline photograph

This image provides landscape and visual context only

Wireline drawing



OS reference: 296661E 703149N
AOD: 606.99 m
Direction of view: 173°
Nearest turbine: 8 km

Horizontal field of view: 90° (cylindrical projection)
Principal distance: 522 mm
Paper size: 841 x 297 mm (half A1)
Correct printed image size: 820 x 260 mm

Camera: NIKON D600
Lens: 50mm Fixed Focal Length
Camera height: 1.5 m

Photography Date: 29/08/2023
Photography Time: 10:52

Wind Farm Developments key
(by status):

Proposed scheme
Operational
Consented

Application

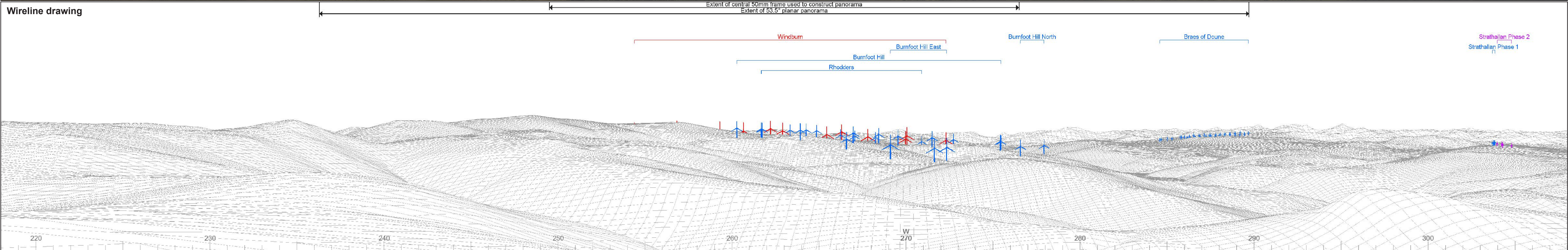
Windburn
Figure 7.10a
VP03: Innerdownie



Baseline photograph

This image provides landscape and visual context only

Wireline drawing



OS reference: 296661E 703149N
AOD: 606.99 m
Direction of view: 263°
Nearest turbine: 8 km

Horizontal field of view: 90° (cylindrical projection)
Principal distance: 522 mm
Paper size: 841 x 297 mm (half A1)
Correct printed image size: 820 x 260 mm

Camera: NIKON D600
Lens: 50mm Fixed Focal Length
Camera height: 1.5 m

Photography Date: 29/08/2023
Photography Time: 10:52

Wind Farm Developments key
(by status):

Proposed scheme
Operational
Consented

Application

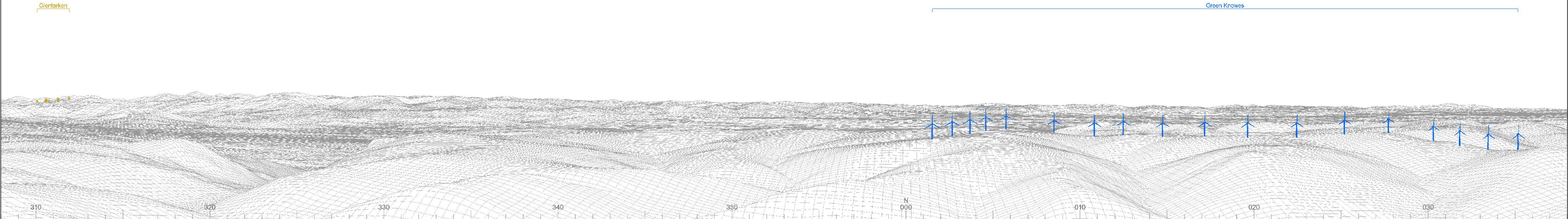
Windburn
Figure 7.10b
VP03: Innerdownie



Baseline photograph

This image provides landscape and visual context only

Wireline drawing



OS reference:	296661E 703149N	Horizontal field of view:	90° (cylindrical projection)	Camera:	NIKON D600	Photography Date:	29/08/2023
AOD:	606.99 m	Principal distance:	522 mm	Lens:	50mm Fixed Focal Length	Photography Time:	10:52
Direction of view:	353°	Paper size:	841 x 297 mm (half A1)	Camera height:	1.5 m		
Nearest turbine:	8 km	Correct printed image size:	820 x 260 mm				

Wind Farm Developments key
(by status):

Proposed scheme	Application
Operational	
Consented	

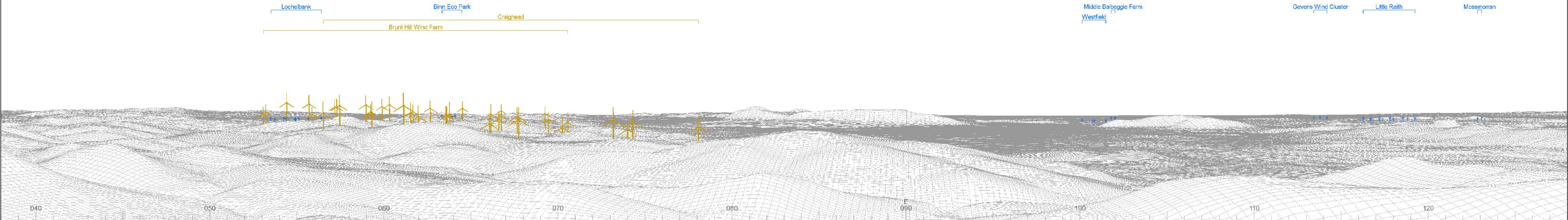
Windburn
Figure 7.10c
VP03: Innerdownie



Baseline photograph

This image provides landscape and visual context only

Wireline drawing



OS reference: 296661E 703149N
AOD: 606.99 m
Direction of view: 83°
Nearest turbine: 8 km

Horizontal field of view: 90° (cylindrical projection)
Principal distance: 522 mm
Paper size: 841 x 297 mm (half A1)
Correct printed image size: 820 x 260 mm

Camera: NIKON D600
Lens: 50mm Fixed Focal Length
Camera height: 1.5 m

Photography Date: 29/08/2023
Photography Time: 10:52

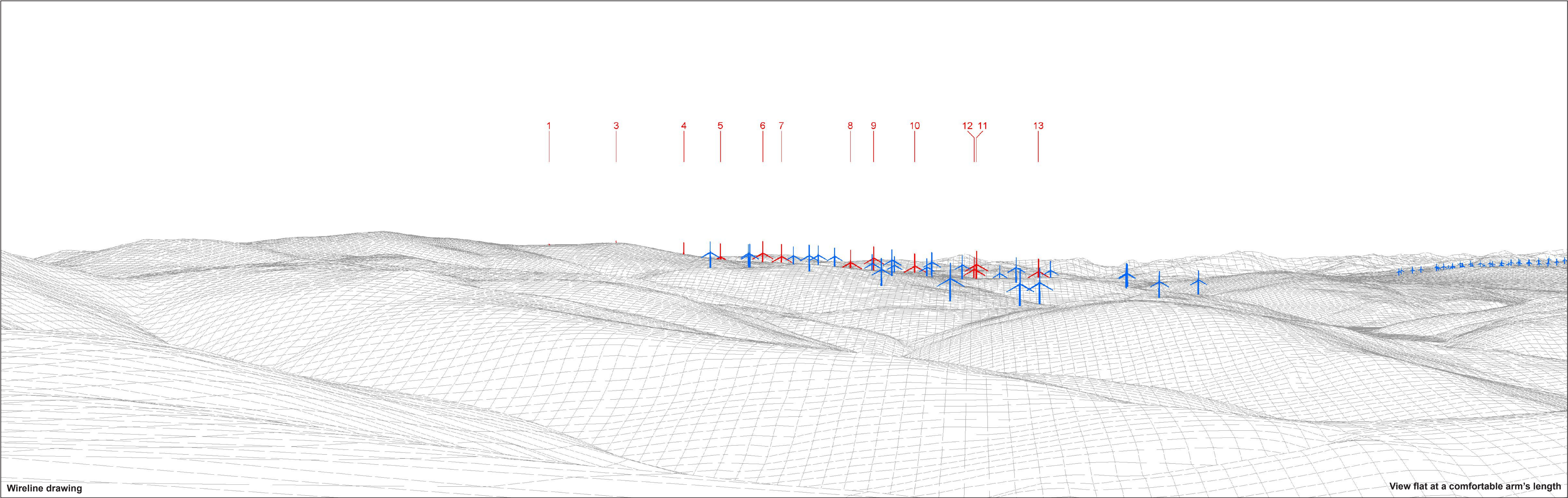
Wind Farm Developments key
(by status):

Proposed scheme
Operational
Consented

Application

Windburn
Figure 7.10d
VP03: Innerdownie

© Crown copyright and database rights 2025 Ordnance Survey AC0000608122



Wireline drawing

View flat at a comfortable arm's length



OS reference:	296661E 703149N	Horizontal field of view:	53.5° (planar projection)
AOD:	606.99 m	Principal distance:	812.5 mm
Direction of view:	263°	Paper size:	841 x 297 mm (half A1)
Nearest turbine:	8 km	Correct printed image size:	820 x 260 mm

Wind Farm Developments key
(by status):

Proposed scheme
Operational

Windburn
Figure 7.10e
VP03: Innerdownie



Photomontage - including infrastructure

View flat at a comfortable arm's length



OS reference:	296661E 703149N	Horizontal field of view:	53.5° (planar projection)	Camera:	NIKON D600	Photography Date:	29/08/2023
AOD:	606.99 m	Principal distance:	812.5 mm	Lens:	50mm Fixed Focal Length	Photography Time:	10:52
Direction of view:	263°	Paper size:	841 x 297 mm (half A1)	Camera height:	1.5 m		
Nearest turbine:	8 km	Correct printed image size:	820 x 260 mm				

Windburn
Figure 7.10f
VP03: Innerdownie