

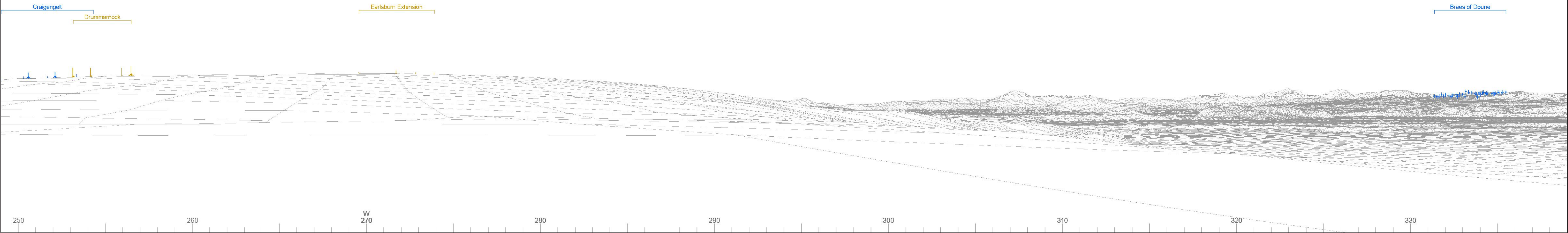




Baseline photograph

This image provides landscape and visual context only

Wireline drawing



OS reference:	282630E 689776N	Horizontal field of view:	90° (cylindrical projection)	Camera:	NIKON D750	Photography Date:	30/10/2023
AOD:	41.14 m	Principal distance:	522 mm	Lens:	50mm Fixed Focal Length	Photography Time:	14:21
Direction of view:	294°	Paper size:	841 x 297 mm (half A1)	Camera height:	1.5 m		
Nearest turbine:	12.37 km	Correct printed image size:	820 x 260 mm				

Wind Farm Developments key  
(by status):

Proposed scheme	Application
Operational	
Consented	

Windburn  
**Figure 7.18a**  
**VP11: Cowie Road at Easter Greenyards**

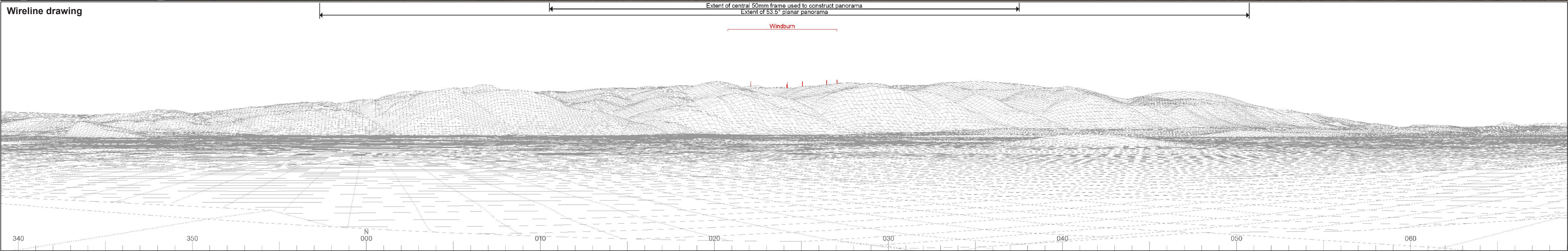




Baseline photograph

This image provides landscape and visual context only

Wireline drawing



OS reference: 282630E 689776N  
AOD: 41.14 m  
Direction of view: 24°  
Nearest turbine: 12.37 km

Horizontal field of view: 90° (cylindrical projection)  
Principal distance: 522 mm  
Paper size: 841 x 297 mm (half A1)  
Correct printed image size: 820 x 260 mm

Camera: NIKON D750  
Lens: 50mm Fixed Focal Length  
Camera height: 1.5 m

Photography Date: 30/10/2023  
Photography Time: 14:21

Wind Farm Developments key  
(by status):

Proposed scheme  
Operational  
Consented

Application

Windburn  
Figure 7.18b  
VP11: Cowie Road at Easter Greenyards

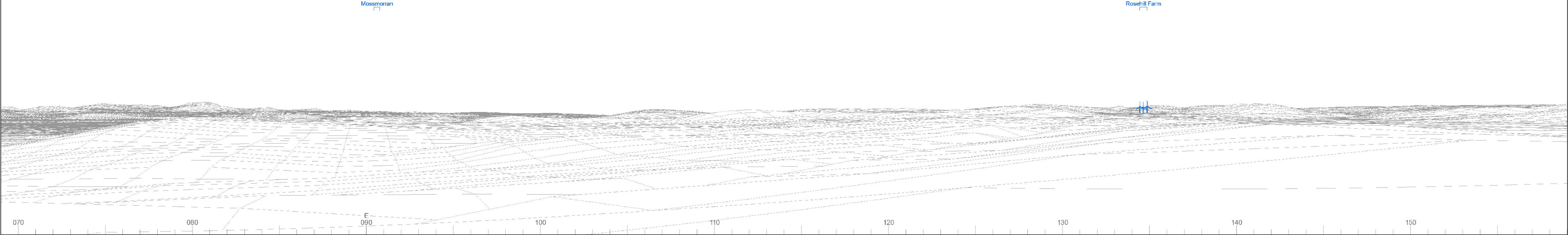




Baseline photograph

This image provides landscape and visual context only

Wireline drawing



OS reference:	282630E 689776N	Horizontal field of view:	90° (cylindrical projection)	Camera:	NIKON D750	Photography Date:	30/10/2023
AOD:	41.14 m	Principal distance:	522 mm	Lens:	50mm Fixed Focal Length	Photography Time:	14:21
Direction of view:	114°	Paper size:	841 x 297 mm (half A1)	Camera height:	1.5 m		
Nearest turbine:	12.37 km	Correct printed image size:	820 x 260 mm				

Wind Farm Developments key  
(by status):

Proposed scheme	Application
Operational	
Consented	

Windburn  
Figure 7.18c  
VP11: Cowie Road at Easter Greenyards

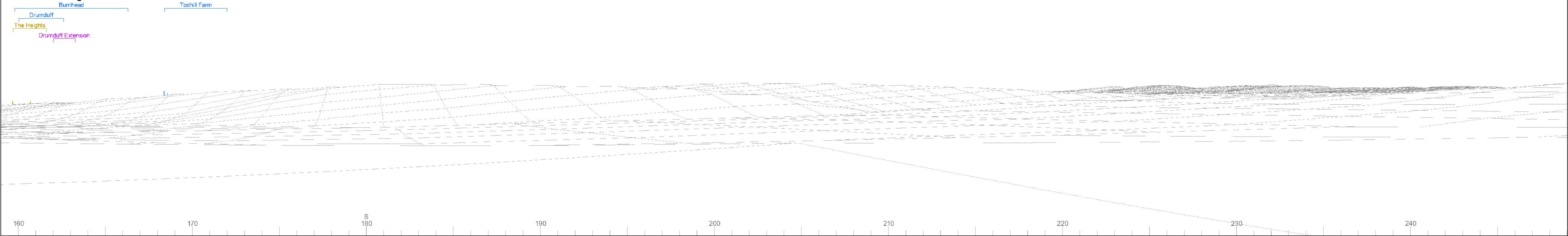




Baseline photograph

This image provides landscape and visual context only

Wireline drawing



OS reference:	282630E 689776N	Horizontal field of view:	90° (cylindrical projection)	Camera:	NIKON D750	Photography Date:	30/10/2023
AOD:	41.14 m	Principal distance:	522 mm	Lens:	50mm Fixed Focal Length	Photography Time:	14:21
Direction of view:	204°	Paper size:	841 x 297 mm (half A1)	Camera height:	1.5 m		
Nearest turbine:	12.37 km	Correct printed image size:	820 x 260 mm				

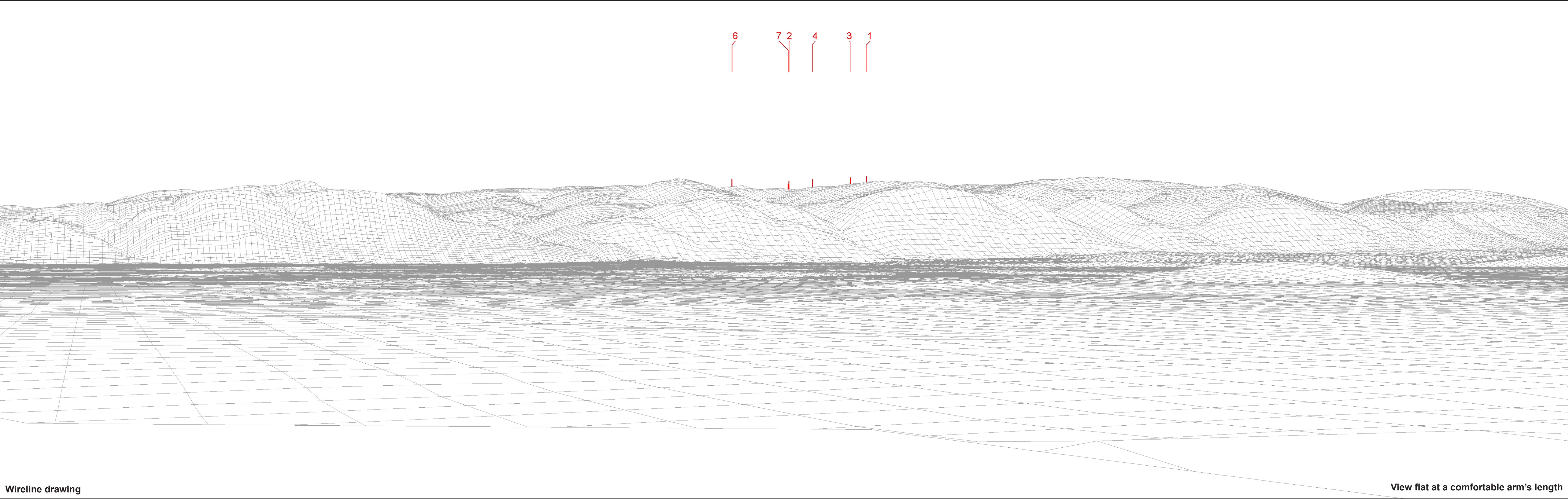
Wind Farm Developments key  
(by status):

Proposed scheme	Application
Operational	
Consented	

Windburn  
Figure 7.18d  
VP11: Cowie Road at Easter Greenyards



© Crown copyright and database rights 2025 Ordnance Survey A0000008122



Wireline drawing

View flat at a comfortable arm's length



OS reference:	282630E 689776N	Horizontal field of view:	53.5° (planar projection)
AOD:	41.14 m	Principal distance:	812.5 mm
Direction of view:	24°	Paper size:	841 x 297 mm (half A1)
Nearest turbine:	12.37 km	Correct printed image size:	820 x 260 mm

Wind Farm Developments key  
(by status):

Proposed scheme  
Operational

Windburn  
Figure 7.18e  
VP11: Cowie Road at Easter Greenyards





Photomontage

View flat at a comfortable arm's length



OS reference:	282630E 689776N	Horizontal field of view:	53.5° (planar projection)	Camera:	NIKON D750	Photography Date:	30/10/2023
AOD:	41.14 m	Principal distance:	812.5 mm	Lens:	50mm Fixed Focal Length	Photography Time:	14:21
Direction of view:	24°	Paper size:	841 x 297 mm (half A1)	Camera height:	1.5 m		
Nearest turbine:	12.37 km	Correct printed image size:	820 x 260 mm				

Windburn  
**Figure 7.18f**  
**VP11: Cowie Road at Easter Greenyards**