

LEGEND

- Application Boundary
- Proposed Turbine Location
- 5km Intervals from Outermost Turbines
- Viewpoint

Wind Farm Location (By Status)

- Operational
- Consented
- Application Submitted
- 53.5° Field of View
- 90° Field of View

Theoretical Blade Tip Visibility (149.9m)

- 1 - 3 Turbine Blade Tips Visible
- 4 - 7 Turbine Blade Tips Visible
- 8 - 10 Turbine Blade Tips Visible
- 11 - 13 Turbine Blade Tips Visible

NOTES

Cumulative wind farm sites are shown only to 25 km.

The ZTV is calculated to turbine blade tip height (149.9m) from a viewing height of 2m above ground level.

The terrain model assumes bare earth and is derived from OS Terrain 50 height data (obtained from Ordnance Survey July, 2024).

Earth curvature and atmospheric refraction have been taken into account. The ZTV was calculated using ArcGIS Pro 3.2.1.

Extent of Right Hand Map Frame

WINDBURN WIND FARM LTD

SLR LUC

WINDBURN WIND FARM
LVIA

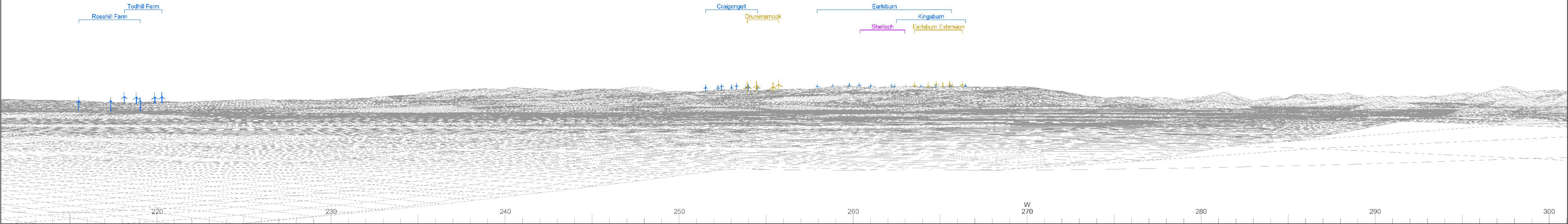
VIEWPOINT 9
CLACKMANNAN TOWER

Figure 7.16

Scale 1:30,000 @ A3 Date MAY 2025



Wireline drawing

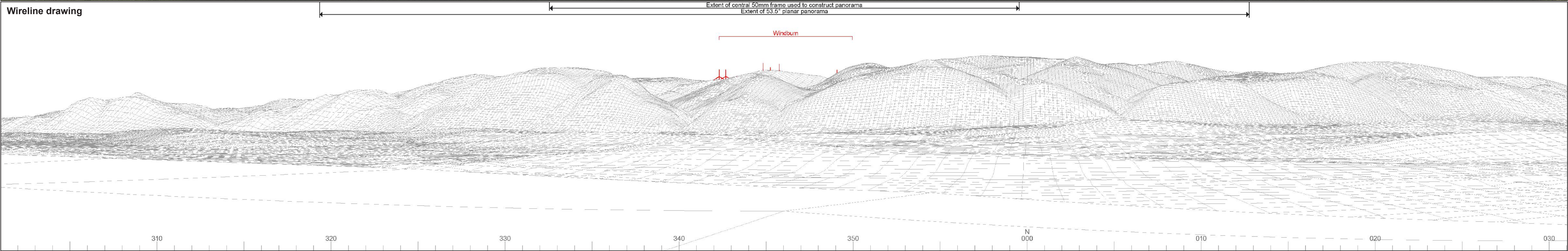




Baseline photograph

This image provides landscape and visual context only

Wireline drawing



OS reference: 290653E 691972N
AOD: 57.8 m
Direction of view: 346°
Nearest turbine: 9.15 km

Horizontal field of view: 90° (cylindrical projection)
Principal distance: 522 mm
Paper size: 841 x 297 mm (half A1)
Correct printed image size: 820 x 260 mm

Camera: NIKON D750
Lens: 50mm Fixed Focal Length
Camera height: 1.5 m

Photography Date: 11/10/2023
Photography Time: 11:40

Wind Farm Developments key
(by status):

Proposed scheme
Operational
Consented

Application

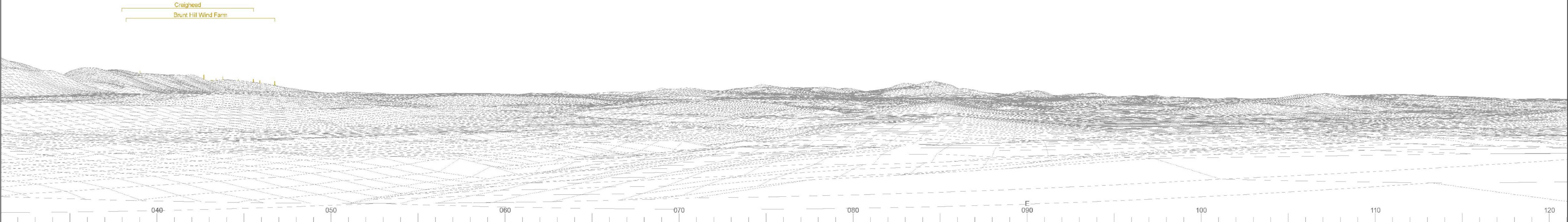
Windburn
Figure 7.16b
VP09: Clackmannan Tower



Baseline photograph

This image provides landscape and visual context only

Wireline drawing



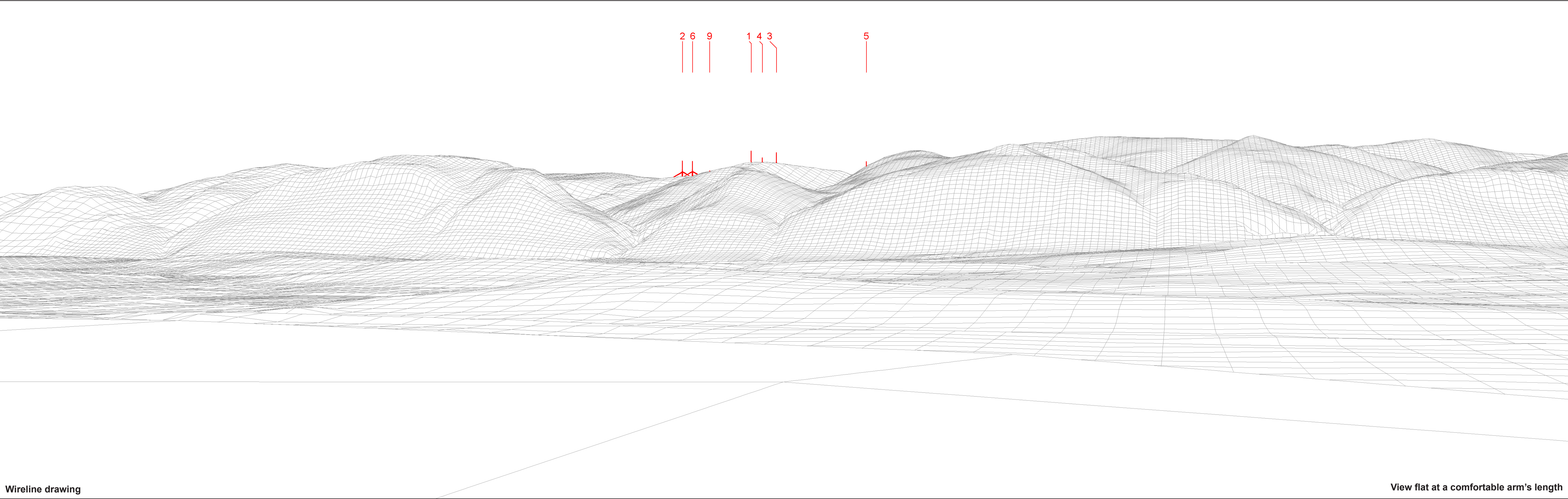
OS reference:	290653E 691972N	Horizontal field of view:	90° (cylindrical projection)	Camera:	NIKON D750	Photography Date:	11/10/2023
AOD:	57.8 m	Principal distance:	522 mm	Lens:	50mm Fixed Focal Length	Photography Time:	11:40
Direction of view:	76°	Paper size:	841 x 297 mm (half A1)	Camera height:	1.5 m		
Nearest turbine:	9.15 km	Correct printed image size:	820 x 260 mm				

Wind Farm Developments key
(by status):

Proposed scheme	Application
Operational	
Consented	

Windburn
Figure 7.16c
VP09: Clackmannan Tower

© Crown copyright and database rights 2025 Ordnance Survey/A0000608122



Wireline drawing

View flat at a comfortable arm's length



OS reference:	290653E 691972N	Horizontal field of view:	53.5° (planar projection)
AOD:	57.8 m	Principal distance:	812.5 mm
Direction of view:	346°	Paper size:	841 x 297 mm (half A1)
Nearest turbine:	9.15 km	Correct printed image size:	820 x 260 mm

Wind Farm Developments key
(by status):

Proposed scheme
Operational

Windburn
Figure 7.16e
VP09: Clackmannan Tower



© Crown copyright and database rights 2025 Ordnance Survey A0000008122



OS reference:	290653E 691972N	Horizontal field of view:	53.5° (planar projection)	Camera:	NIKON D750	Photography Date:	11/10/2023
AOD:	57.8 m	Principal distance:	812.5 mm	Lens:	50mm Fixed Focal Length	Photography Time:	11:40
Direction of view:	346°	Paper size:	841 x 297 mm (half A1)	Camera height:	1.5 m		
Nearest turbine:	9.15 km	Correct printed image size:	820 x 260 mm				

Windburn
Figure 7.16f
VP09: Clackmannan Tower