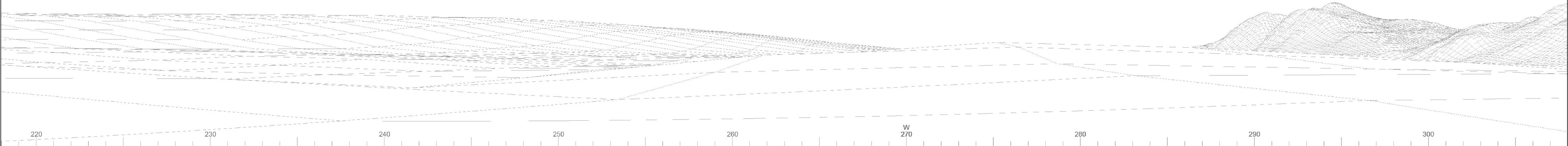




Baseline photograph

This image provides landscape and visual context only

Wireline drawing



OS reference:	288746E 695302N	Horizontal field of view:	90° (cylindrical projection)	Camera:	NIKON D750	Photography Date:	30/10/2023
AOD:	26.67 m	Principal distance:	522 mm	Lens:	50mm Fixed Focal Length	Photography Time:	11:08
Direction of view:	263°	Paper size:	841 x 297 mm (half A1)	Camera height:	1.5 m		
Nearest turbine:	5.52 km	Correct printed image size:	820 x 260 mm				

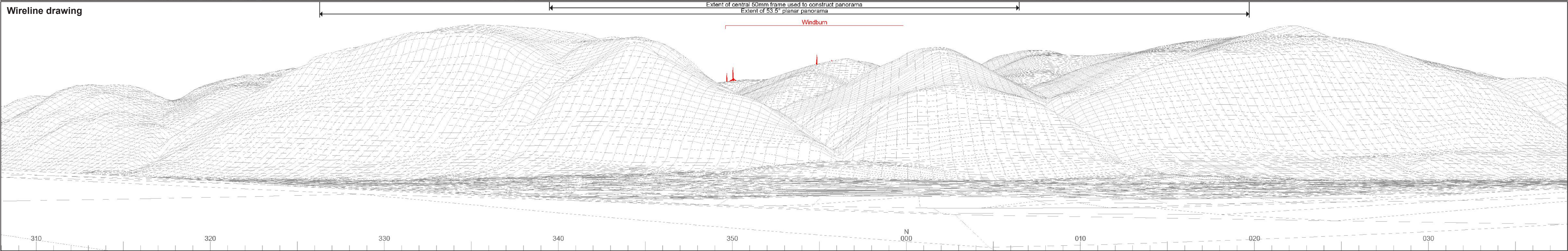
Wind Farm Developments key
(by status):

Proposed scheme	Application
Operational	
Consented	

Windburn
Figure 7.12a
VP05: B9140 near Collyland



Wireline drawing



OS reference:	288746E 695302N	Horizontal field of view:	90° (cylindrical projection)	Camera:	NIKON D750	Photography Date:	30/10/2023
AOD:	26.67 m	Principal distance:	522 mm	Lens:	50mm Fixed Focal Length	Photography Time:	11:08
Direction of view:	353°	Paper size:	841 x 297 mm (half A1)	Camera height:	1.5 m		
Nearest turbine:	5.52 km	Correct printed image size:	820 x 260 mm				

Wind Farm Developments key
(by status):

Proposed scheme	Application
Operational	
Consented	

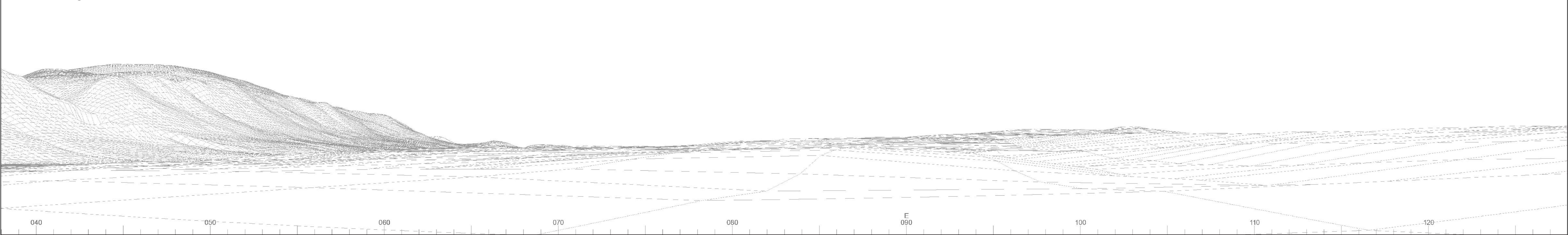
Windburn
Figure 7.12b
VP05: B9140 near Collyland



Baseline photograph

This image provides landscape and visual context only

Wireline drawing



OS reference: 288746E 695302N
AOD: 26.67 m
Direction of view: 83°
Nearest turbine: 5.52 km

Horizontal field of view: 90° (cylindrical projection)
Principal distance: 522 mm
Paper size: 841 x 297 mm (half A1)
Correct printed image size: 820 x 260 mm

Camera: NIKON D750
Lens: 50mm Fixed Focal Length
Camera height: 1.5 m

Photography Date: 30/10/2023
Photography Time: 11:08

Wind Farm Developments key
(by status):

Proposed scheme
Operational
Consented

Application

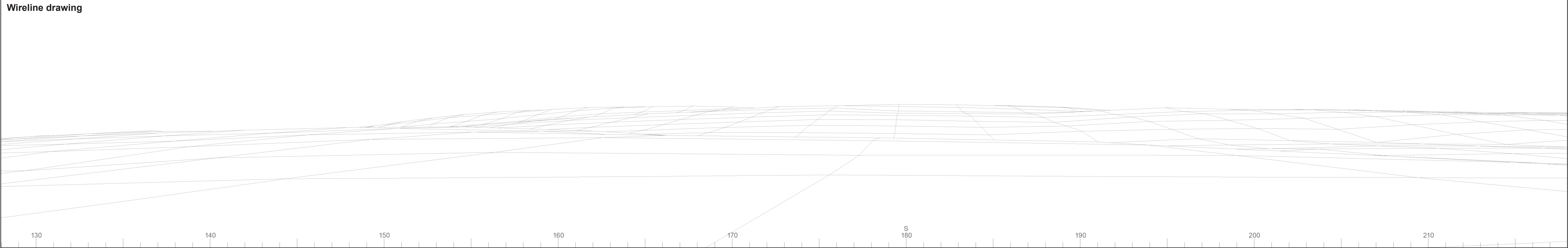
Windburn
Figure 7.12c
VP05: B9140 near Collyland



Baseline photograph

This image provides landscape and visual context only

Wireline drawing



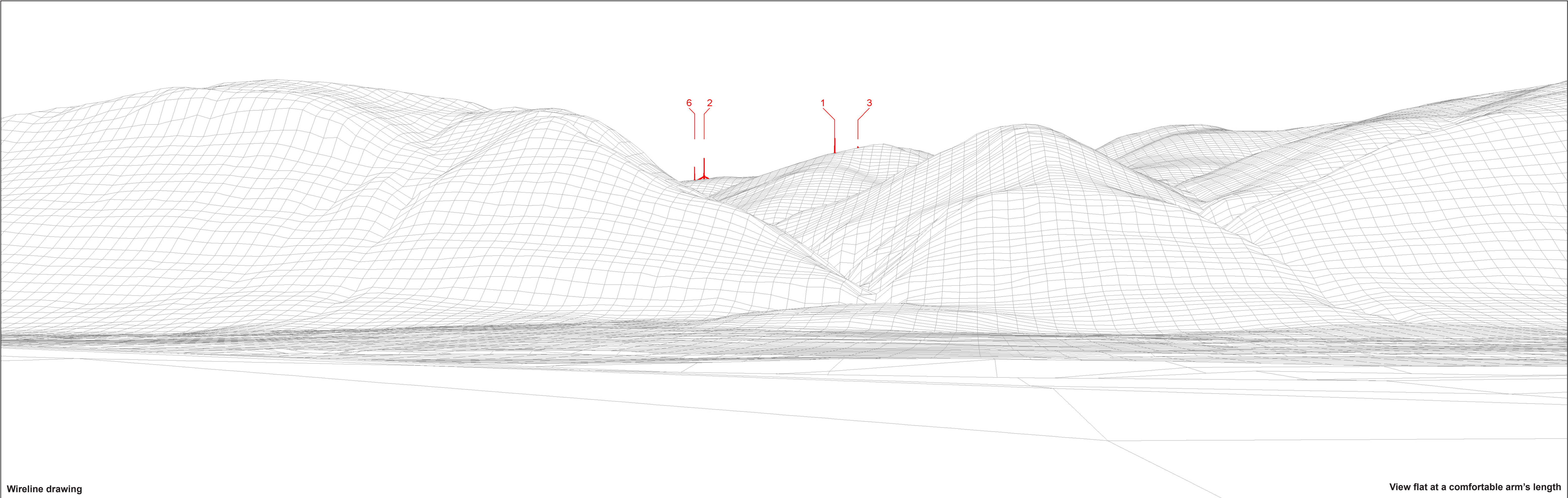
OS reference:	288746E 695302N	Horizontal field of view:	90° (cylindrical projection)	Camera:	NIKON D750	Photography Date:	30/10/2023
AOD:	26.67 m	Principal distance:	522 mm	Lens:	50mm Fixed Focal Length	Photography Time:	11:08
Direction of view:	173°	Paper size:	841 x 297 mm (half A1)	Camera height:	1.5 m		
Nearest turbine:	5.52 km	Correct printed image size:	820 x 260 mm				

Wind Farm Developments key
(by status):

Proposed scheme	Application
Operational	
Consented	

Windburn
Figure 7.12d
VP05: B9140 near Collyland

© Crown copyright and database rights 2025 Ordnance Survey/A000060812



Wireline drawing

View flat at a comfortable arm's length



OS reference:	288746E 695302N	Horizontal field of view:	53.5° (planar projection)
AOD:	26.67 m	Principal distance:	812.5 mm
Direction of view:	353°	Paper size:	841 x 297 mm (half A1)
Nearest turbine:	5.52 km	Correct printed image size:	820 x 260 mm

Wind Farm Developments key
(by status):

Proposed scheme
Operational

Windburn
Figure 7.12e
VP05: B9140 near Collyland



Photomontage

View flat at a comfortable arm's length



OS reference:	288746E 695302N	Horizontal field of view:	53.5° (planar projection)	Camera:	NIKON D750	Photography Date:	30/10/2023
AOD:	26.67 m	Principal distance:	812.5 mm	Lens:	50mm Fixed Focal Length	Photography Time:	11:08
Direction of view:	353°	Paper size:	841 x 297 mm (half A1)	Camera height:	1.5 m		
Nearest turbine:	5.52 km	Correct printed image size:	820 x 260 mm				

Windburn
Figure 7.12f
VP05: B9140 near Collyland