

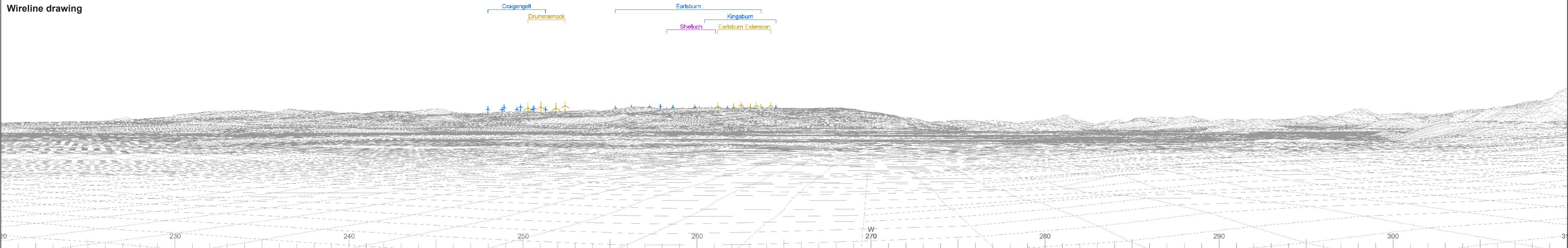




Baseline photograph

This image provides landscape and visual context only.

Wireline drawing



OS reference:	288881E 692515N	Horizontal field of view:	90° (cylindrical projection)	Camera:	NIKON D750	Photography Date:	30/10/2023
AOD:	32 m	Principal distance:	522 mm	Lens:	50mm Fixed Focal Length	Photography Time:	12:47
Direction of view:	265°	Paper size:	841 x 297 mm (half A1)	Camera height:	1.5 m		
Nearest turbine:	8.31 km	Correct printed image size:	820 x 260 mm				

Wind Farm Developments key  
(by status):

Proposed scheme  
Operational  
Consented

Application

An altered height above ground level was used for where local topography did not match the wireframes due to data resolution

Windburn  
Figure 7.15a  
VP08: Alloa Tower

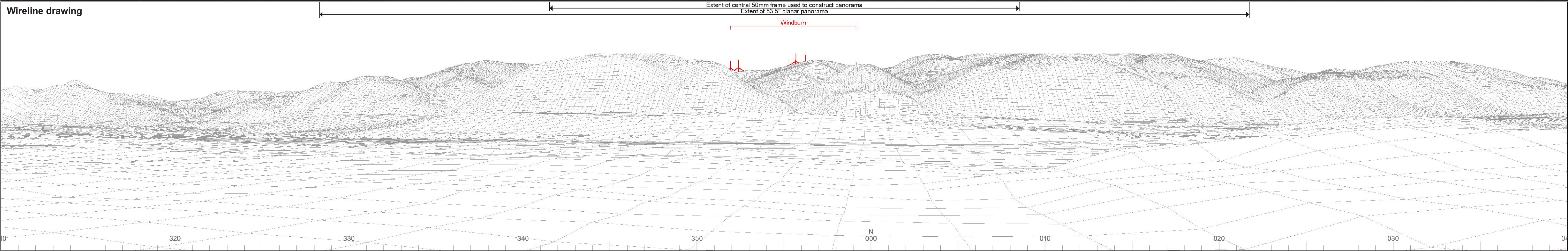




Baseline photograph

This image provides landscape and visual context only

Wireline drawing



OS reference:	288881E 692515N	Horizontal field of view:	90° (cylindrical projection)	Camera:	NIKON D750	Photography Date:	30/10/2023
AOD:	32 m	Principal distance:	522 mm	Lens:	50mm Fixed Focal Length	Photography Time:	12:47
Direction of view:	355°	Paper size:	841 x 297 mm (half A1)	Camera height:	1.5 m		
Nearest turbine:	8.31 km	Correct printed image size:	820 x 260 mm				

Wind Farm Developments key  
(by status):

Proposed scheme  
Operational  
Consented

Application

An altered height above ground level was used for where local topography did not match the wireframes due to data resolution

Windburn  
Figure 7.15b  
VP08: Alloa Tower

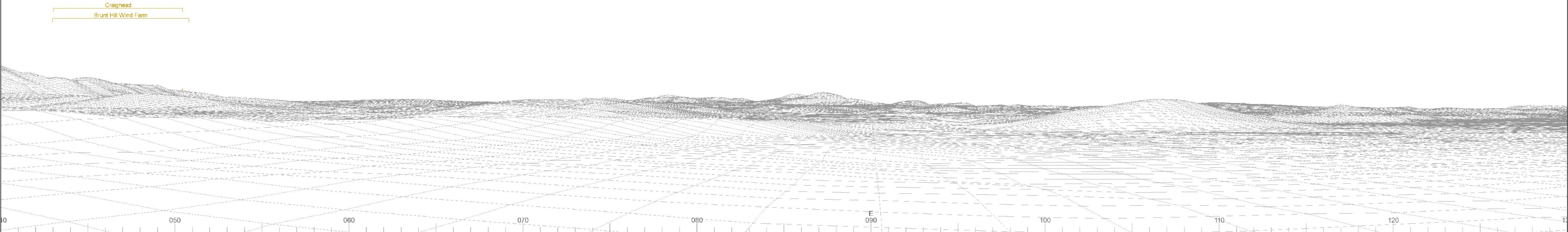




Baseline photograph

This image provides landscape and visual context only

Wireline drawing



OS reference: 288881E 692515N  
AOD: 32 m  
Direction of view: 85°  
Nearest turbine: 8.31 km

Horizontal field of view: 90° (cylindrical projection)  
Principal distance: 522 mm  
Paper size: 841 x 297 mm (half A1)  
Correct printed image size: 820 x 260 mm

Camera: NIKON D750  
Lens: 50mm Fixed Focal Length  
Camera height: 1.5 m

Photography Date: 30/10/2023  
Photography Time: 12:47

Wind Farm Developments key  
(by status):

Proposed scheme  
Operational  
Consented

Application

An altered height above ground level was used for where local topography did not match the wireframes due to data resolution

Windburn  
Figure 7.15c  
VP08: Alloa Tower

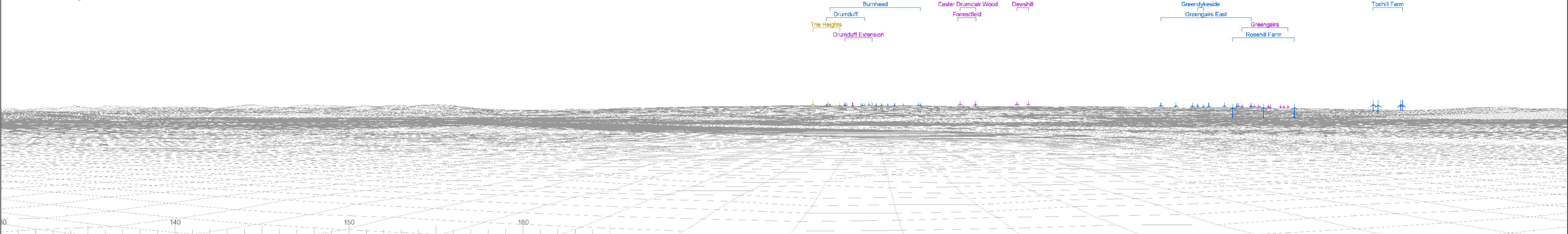




Baseline photograph

This image provides landscape and visual context only

Wireline drawing



OS reference: 288881E 692515N  
AOD: 32 m  
Direction of view: 175°  
Nearest turbine: 8.31 km

Horizontal field of view: 90° (cylindrical projection)  
Principal distance: 522 mm  
Paper size: 841 x 297 mm (half A1)  
Correct printed image size: 820 x 260 mm

Camera: NIKON D750  
Lens: 50mm Fixed Focal Length  
Camera height: 1.5 m

Photography Date: 30/10/2023  
Photography Time: 12:47

Wind Farm Developments key  
(by status):

Proposed scheme  
Operational  
Consented

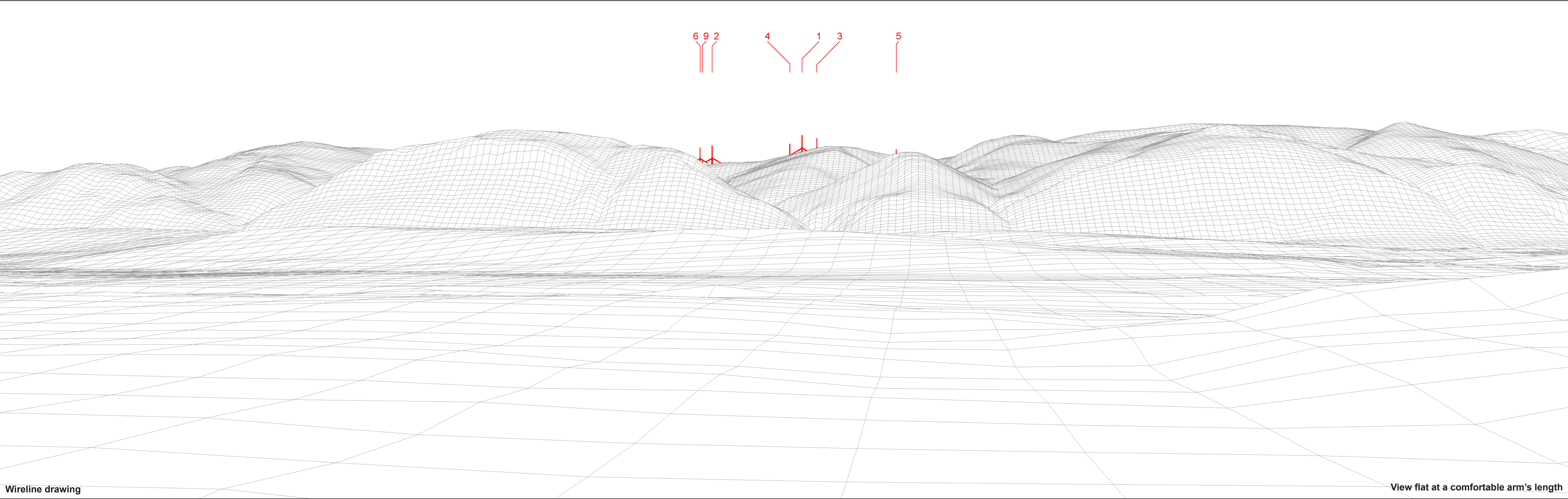
Application

An altered height above ground level was used for where local topography did not match the wireframes due to data resolution

Windburn  
Figure 7.15d  
VP08: Alloa Tower



© Crown copyright and database rights 2025 Ordnance Survey/A0000608122



Wireline drawing

View flat at a comfortable arm's length



OS reference:	288881E 692515N	Horizontal field of view:	53.5° (planar projection)
AOD:	32 m	Principal distance:	812.5 mm
Direction of view:	355°	Paper size:	841 x 297 mm (half A1)
Nearest turbine:	8.31 km	Correct printed image size:	820 x 260 mm

Wind Farm Developments key  
(by status):

Proposed scheme  
Operational

An altered height above ground level was used for where local  
topography did not match the wireframes due to data resolution

Windburn  
Figure 7.15e  
VP08: Alloa Tower





Photomontage

View flat at a comfortable arm's length



OS reference:	288881E 692515N	Horizontal field of view:	53.5° (planar projection)	Camera:	NIKON D750	Photography Date:	30/10/2023
AOD:	32 m	Principal distance:	812.5 mm	Lens:	50mm Fixed Focal Length	Photography Time:	12:47
Direction of view:	355°	Paper size:	841 x 297 mm (half A1)	Camera height:	1.5 m		
Nearest turbine:	8.31 km	Correct printed image size:	820 x 260 mm				

An altered height above ground level was used for where local topography did not match the wireframes due to data resolution

Windburn  
Figure 7.15f  
VP08: Alloa Tower